



ANHOLT OFFSHORE WIND FARM

Construction of Anholt Offshore Wind Farm

Anholt Offshore Wind Farm, located between Djursland and Anholt in Kattegat, supplies green electricity to over 400,000 Danish households. The farm consists of 111 turbines, each with a capacity of 3.6 MW, totaling 400 MW, and spans approximately 20 km by 5 km.

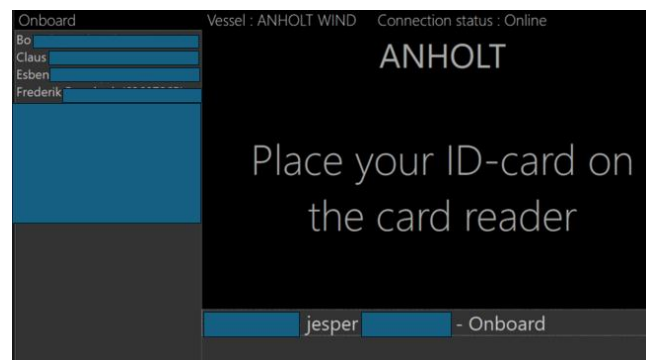
Completed in 2013, Ørsted established a dedicated service hub on the quay in Grenaa, including offices, storage, and workshop facilities. From here, service vessels transport technicians to the turbines for maintenance.

SIEB Teknik supports this operation by tracking personnel from the moment they leave Grenaa, arrive at a turbine, and return safely.



People Tracking Solution

Our solution uses TETRA to transmit data and Four:C software for processing and management.



Before heading offshore, all personnel register when boarding the Crew Transfer Vessel (CTV). This registration updates Ørsted's central system (SOMS) with the employee's location. Upon arrival at the turbine, the system records the personnel's presence, ensuring SOMS always reflects the current location of every technician.

The solution includes Celab's Four:C Swipe, installed on each CTV, which continuously sends real-time data back to the onshore Four:C PT server, providing complete oversight of offshore personnel movements.